



Family Planning Association of SA Inc

18th Annual Report
for the year ended 30th June, 1988



Family Planning Association of SA Inc

SEXUAL HEALTH SERVICES

Clinics
Community Education
Professional Education and Training
Social Work
Sexual Health Hotline
Library Resource Centre



Member of the Family Planning Federation of Australia
Affiliated with the International Planned Parenthood Federation

ACKNOWLEDGEMENTS

The Family Planning Association of SA Inc expresses its sincere appreciation for the continuing financial support received from the Australian and South Australian Governments. The Association also extends its gratitude to the people and community organisations who have assisted and supported us during the year.

c Family Planning Association of SA Inc 1988
All Rights Reserved

National Library of Australia
ISSN 1031-9778

The Family Planning Association of SA Inc is a community based organisation incorporated under the Associations Incorporation Act. It is governed by a Council elected from its members. FPA sexual health care services are provided with funding received from the Australian and South Australian Governments.

PHILOSOPHY

The Family Planning Association of South Australia is committed to providing high quality sexuality, relationship, and reproductive health services for all members of the community. The Association believes that sexuality is an integral part of the total personality, and promotes the right of all people to information and services which enable informed choice and decision-making. It is acknowledged that the expression of sexuality is of varying importance to individuals, and that in our society it is an area of potential exploitation.

OBJECTIVES

To provide sexual and reproductive health care to the people of South Australia by the following means.

- . Clinics
- . Drop in Pregnancy Testing Service
- . Unplanned pregnancy counselling, information, and referral for termination of pregnancy or antenatal care
- . Social Work
- . Sexual Health Hotline
- . Community Education Programs
- . Professional Education and Training Programs for health, education and welfare workers.
- . Library Resource Centre
- . Research, monitoring and evaluation of issues and problems directly related to sexuality, sexual and reproductive health.
- . Liaison with other health, education and welfare professionals and agencies involved in the area of sexual health care.
- . Policy development and advice to government departments and other community health agencies
- . Promotion of legislative and social reforms relevant to the philosophy and objectives of the Association.

CONTENTS

| | |
|--|----|
| Message from the President | 4 |
| Patrons, Life Members, Council | 6 |
| Chief Executive Officer's Report | 7 |
| Management & Planning | 9 |
| Sexual Health Services: | |
| • Clinic Services | 13 |
| • F.P.A. Clinic Locations | 17 |
| • Social Work Services | 20 |
| • Community Services | 21 |
| F.P.F.A. Report | 26 |
| Financial Report | 28 |

MESSAGE FROM THE PRESIDENT

The past year has been a significant and challenging one for the Association with the achievement of several major developments.

The redevelopment of the Association's headquarters at Kensington progressed from the planning stage to a reality thanks to the positive leadership of Management Team, forward financial planning by past Councils, excellent advice from Cheesman Architects and the generous support of the people of South Australia. Council also acknowledges its gratitude to the South Australian Health Commission for its assistance in the form of a capital grant of \$100 000 towards the total cost of the building. It is expected that the building will be ready for staff to move in by mid September 1988. The building will be a benefit to clients, staff and visitors providing pleasant and more integrated working space for the services of the Association.

The regionalisation of staff and services continued, with the focus this year on the further development and consolidation of the Regional Teams. The generosity and support of our 'host' agencies is gratefully acknowledged.

The year also saw the smaller Council, which was appointed in 1986, adopt a corporate role in the Association. This approach strengthened the role of Management Team and provided the opportunity for membership on joint working parties.

The Association has been actively represented at a national level on several occasions throughout the year by members of Council and Management Team. Along with representatives from other state Associations, they have continued to raise the profile of Family Planning in Australia. The highlight of the year was our representation at the National Family Planning Forum held in Canberra in June 1988, which was part of the Regional Conference of the International Planned Parenthood Federation.

During the year the Association responded positively to many political and economic challenges. On all occasions it was active in clarifying its role and in promoting the expertise of the staff.

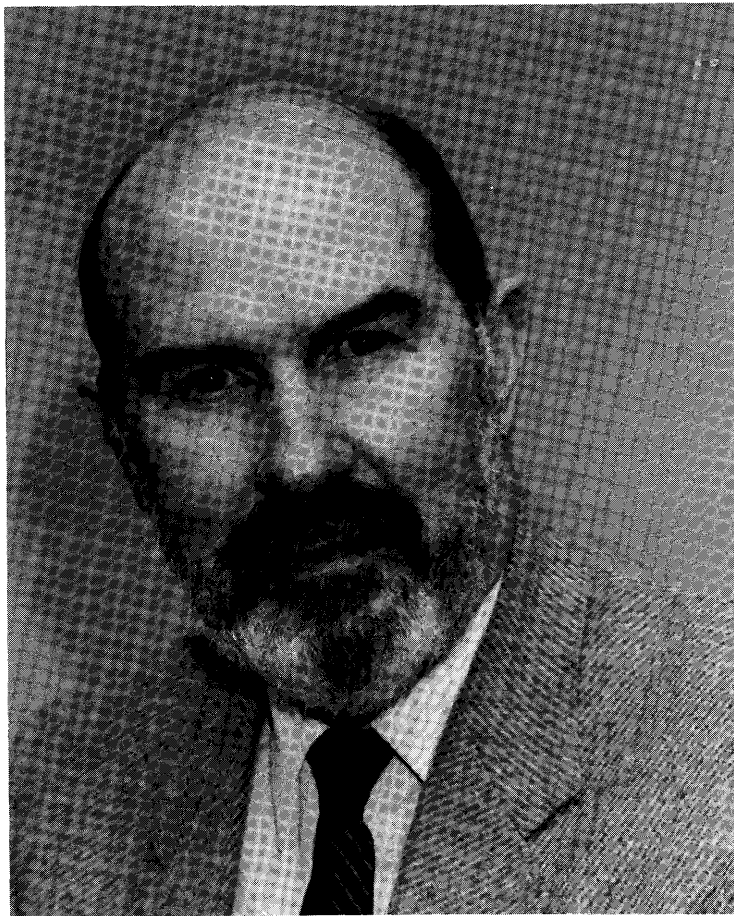
Thanks to the generous financial support from the South Australian Health Commission, the Department of Community Services and Health and the people of South Australia, the Association was able to continue to maintain the current range of sexual health services.

Effective financial management in the current economic climate will become an increasing challenge in the future. The extent of public support which the Association received has been reflected through a 20% client increase for the year.

Council also thank the members for their interest, commitment and support to the Association.

In June 1988 Mrs Heather Macdonald resigned as President. We thank her for her contribution to the Association. Council also extends its sincere appreciation to Management Team and all staff for their dedication and contribution.

RICHARD HICKS



Richard Hicks FPA(SA) President
(Photograph Courtesy of 'The Advertiser', Adelaide)

PATRONS, LIFE MEMBERS & COUNCIL

PATRONS

Vice Regal Patron
His Excellency The Governor of South Australia
Lieutenant General Sir Donald Dunstan, KBE, CB
Dr Winifred Wall, AM
Professor Lloyd Cox, AM

LIFE MEMBERS

Life membership is conferred on the recommendation of Council in recognition of outstanding contribution to the Association.

Dr Karl Ball
Ms Pat Bockner
Ms Rosemary Boucaut
Mrs Gwen Brooking
Ms Janet Browning, OAM
Dr Ina Campbell
Ms Margaret Clark
Professor Lloyd Cox
Dr Kerrie Davies
Dr Olive Johnstone
Dr John Porter
Dr Winifred Wall
Ms Elizabeth Yeatman

COUNCIL

The Council is responsible for governing the business and affairs of the Association. Council members meet monthly to receive reports from Management Team members and to decide on matters of policy and management of the Association.

Council's delegate to the Council of the Family Planning Federation of Australia

Mrs Heather Macdonald

COUNCIL MEMBERS

President
Mrs Heather Macdonald
Vice President
Mr Richard Hicks
Mr Hank Duyverman
Ms Shelley McGinnis
Dr Margaret Moody
Nominee of the South Australian Government
Ms Di Hetzel
Elected staff member
Ms Bev Burnell
Coopted members
Mr George Giakoumis
Ms Pam Schiller
Ms Jo Tiddy

CHIEF EXECUTIVE OFFICER'S REPORT

The past year was a momentous one for FPA with many challenges and considerable achievements. The directions established in the 1986 Review of the Association were pursued and several new projects were undertaken successfully. The Association was rewarded for the immense task of implementing change with some tangible results. Details of these activities are outlined elsewhere in the report.

In April, Council approved a re-organisation of the management structure, which improves the co-ordination of services while maintaining the effectiveness of professional leadership for the occupational groups within the staff. These changes were necessary to support the regionalisation strategy.

This year saw a major new policy agreement with the Education Department of South Australia which will extend sexuality education programs throughout South Australian high schools. The Association shifted its focus away from direct classroom teaching towards working with teachers and began a series of teacher training workshops which will enable teachers to provide sexuality education directly to students. The Association has been working with other agencies to provide a report to the Human Services Committee of the South Australian Cabinet on a comprehensive approach to health education for all South Australian students.

Significant developments in the nursing career structure for the Association's nurses were achieved. After many months of preparation nursing staff began the process of upgrading their salaries and their professional roles in line with the changes to nursing in this State.

In December 1987 and again in June 1988, the Association was presented with further challenges when the Australian Medical Association launched attacks on the professional standard of Association staff. The Association's role as providers of professional education and training for doctors and nurses was reaffirmed in discussions with the Minister of Health, the Chairman of the South Australian Health Commission and representatives of the Australian Medical Association. The Association continues to facilitate good working relationships with general practitioners and the Royal Australian College of General Practitioners.

In March the Association united with other agencies, groups and individuals in the community and lobbied successfully for the defeat of a Bill to amend the Criminal Law regarding women's access to abortion in South Australia. The Bill, which was introduced as a private member's Bill, would have severely disrupted abortion services, especially for women on low incomes and women in country areas. While there is a consensus amongst health professionals that the current law provides reasonable access to services, it is evident that further improvements are needed in the organisation of services in South Australia. The Association has participated in a Ministerial Committee towards this end and has initiated an expansion of the Sexual Health Hotline in order to assist women faced with an unplanned pregnancy and further reduce the incidence of mid-trimester abortions.

On behalf of the staff of the Association I express our sincere thanks to Council members for their valuable contributions to the FPA. I also extend my thanks to Management Team members and all staff for their commitment, support and hard work during this time of challenge and change.

JUDITH DWYER



MANAGEMENT AND PLANNING

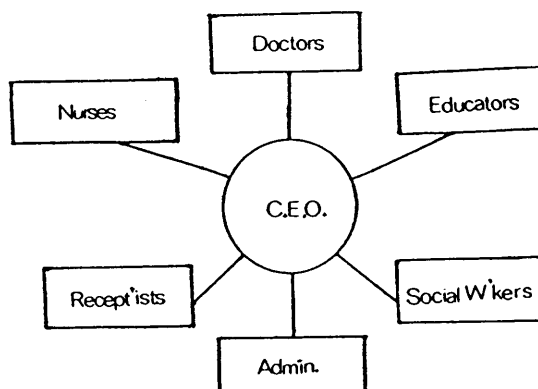
1987-88 saw the re-organisation of the management and planning functions of the Association to bring them into line with the new strategies and directions established by the 1986 Review.

The re-structuring plan was developed through a series of workshops with members of Management Team, staff representatives and a Council member. Miranda Roe, Director of the Parks Community Health Centre, Bruce Aldis (SA Health Commission) and Marj Ellis (FPA Social Worker) assisted with facilitation of workshops and expert advice. Consultation meetings for all staff members were also held and generated useful input to the plan.

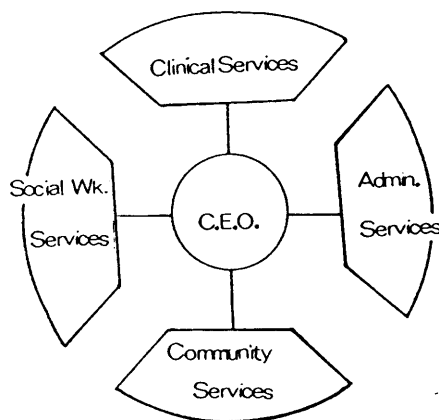
STRUCTURE

Essentially, the change is from structures based on each occupational group of staff (educators, nurses etc) to organisation according to the major service areas.

PREVIOUS STRUCTURE

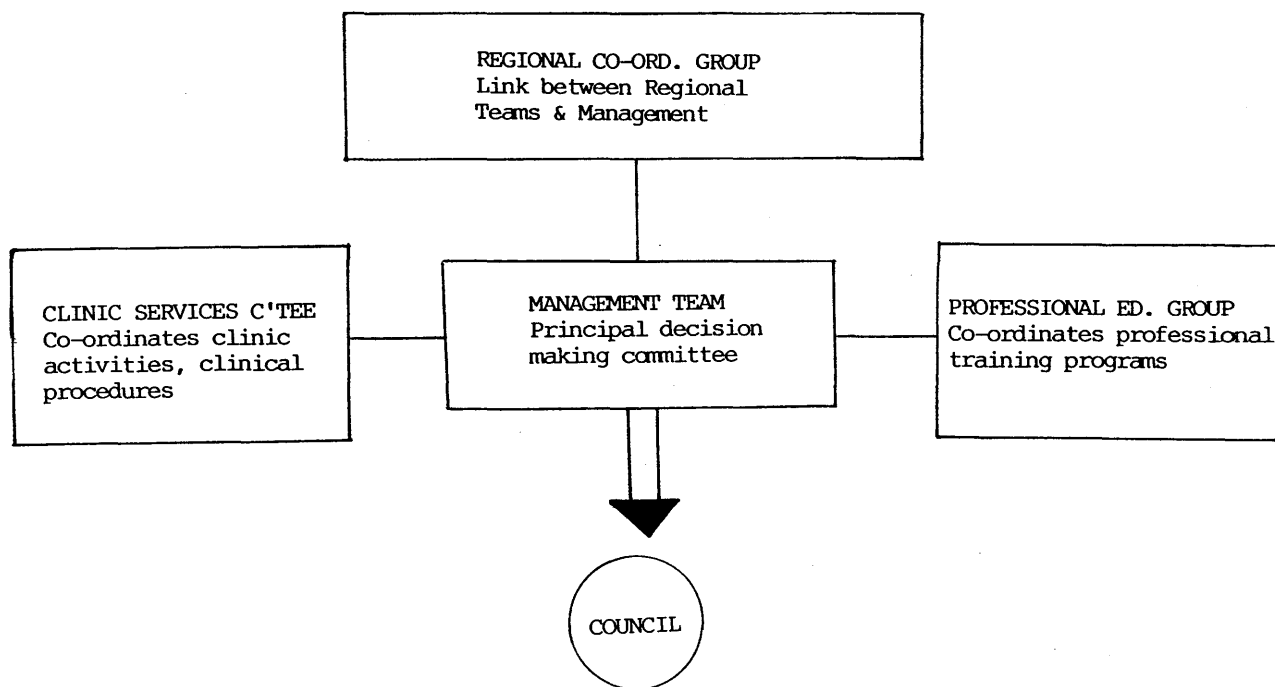


RE-ORGANISED STRUCTURE



CO-ORDINATION

The major planning and co-ordinating committees were also re-organised, and are now as follows:



OTHER COMMITTEES

- . Library Committee
- . Occupational Health & Safety Committe
- . Safety Committee

MEMBERSHIP OF MAJOR COMMITTEES

MANAGEMENT TEAM

Chief Executive Officer
 Judith Dwyer
 Community Services Officer
 Sue Foster
 Principal Nursing Officer
 Jan Dolman
 Senior Medical Officer
 Bronwen Weller
 Senior Social Worker
 Wendy Willow

REGIONAL COORDINATING GROUP

Community Services Officer
 Sue Foster
 Assistant Community Services Officer
 (Also representing Port Pirie)
 Rosalie Earl
 Eastern Team Coordinator
 Juliet Watts
 Inner Southern Team Coordinator
 Jo Hoiles
 Northern Team Coordinator
 Robin Sleeman
 Southern Team Coordinator
 Rae Read
 Western Team Coordinator
 Barbara Kiek

CLINIC SERVICES COMMITTEE

Chair of Clinic Services
 Bronwen Weller
 Principal Nursing Officer
 Jan Dolman
 Clinic Office Coordinator
 Heather Sims
 Chief Executive Officer
 Judith Dwyer

PROFESSIONAL EDUCATION GROUP

Professional Education Coordinator
 Marion Wands
 Community Services Officer
 Sue Foster
 Chief Executive Officer
 Judith Dwyer
 Senior Medical Officer
 Bronwen Weller
 Senior Social Worker
 Wendy Willow
 Nurse Educator
 June Cox
 Nurse Educator
 Bev Burnell
 Country Services Coordinator
 Sally Davis

STAFF INVOLVEMENT

Consultation and information exchange between staff and management are achieved through the roles of supervisors and Team Coordinators; through regular staff meetings and ad hoc working parties; and through representatives of the employee organisations to which staff belong (the Royal Australian Nursing Federation and Australian Social Welfare Union).

SEXUAL HEALTH SERVICES

CLINIC SERVICES

Doctors and nurses provide the following confidential services

- . contraception
- . cervical smear tests
- . breast examinations
- . pregnancy tests
- . unplanned pregnancy counselling, information, referral for termination of pregnancy and antenatal care
- . post coital intervention
- . sexual difficulties counselling
- . premenstrual tension and period problems
- . menopause
- . sexually transmitted diseases
- . safer sex information
- . infertility counselling
- . referrals to specialists

Reception staff play a key role in supporting the provision of these services.

DROP IN PREGNANCY TESTING SERVICE

This new service provides a quick, easy and reliable way for women to find out if they are pregnant. It aims to reduce the worry and uncertainty caused by delays in diagnosis of pregnancy. Clients are given information about obtaining counselling, support and referral services.

- . Commenced on 21 March 1988
- . There were 244 women seen to 30 June.
- . Approximately 88 pregnancy tests were positive; 156 had a negative result.
- . There has been a steady increase in DIPTS client visits.

Pregnancy clinic time has been utilised more effectively since most clients already had time to consider choices.

SEXUAL HEALTH HOTLINE (08) 364 0444 (008) 188 171

Weekdays 8:30am to 9pm
Saturday 9:00am to 1pm

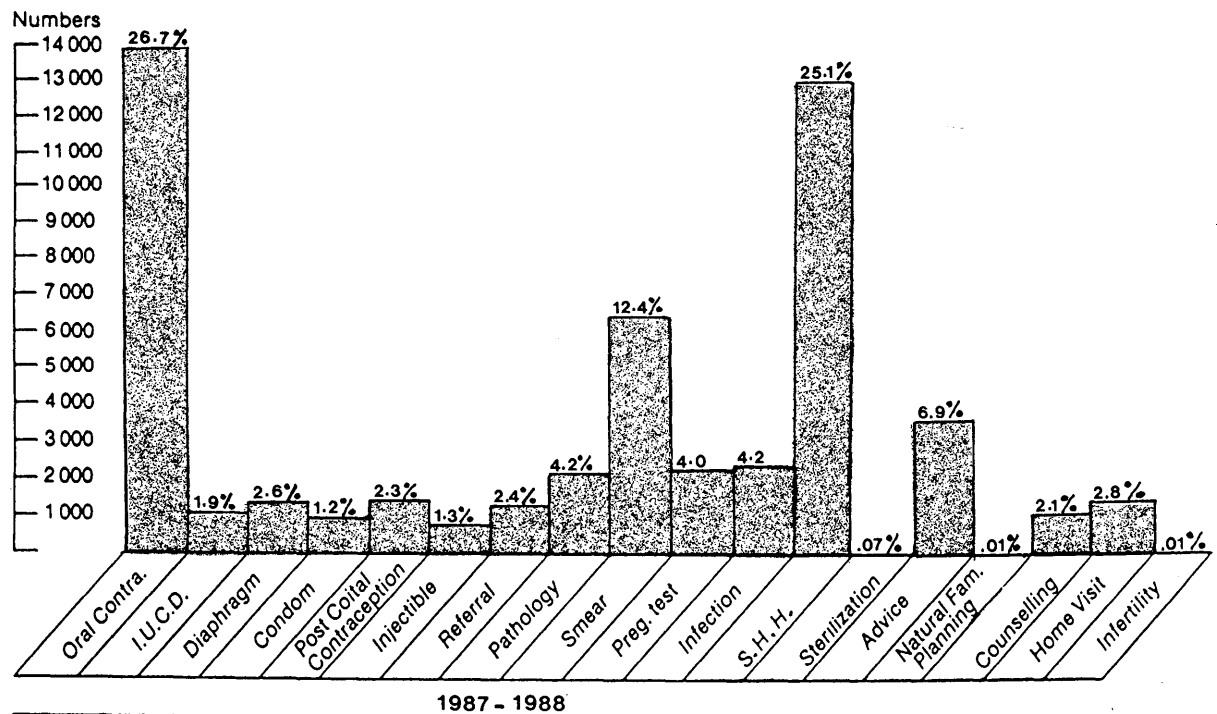
The Sexual Health Hotline is a confidential, free phone-in service that is staffed by nurses and provides information and referral on all areas of contraception, sexuality and relationships, and sexual and reproductive health. This has been a year of expansion for the service. The Sexual Health Hotline will be the initial point of contact for information and referral in the

- . Pelvic Inflammatory Disease Campaign which will be launched on 26 August 1988
- . Unplanned Pregnancy Campaign which will be launched on 19 September 1988

STATISTICS

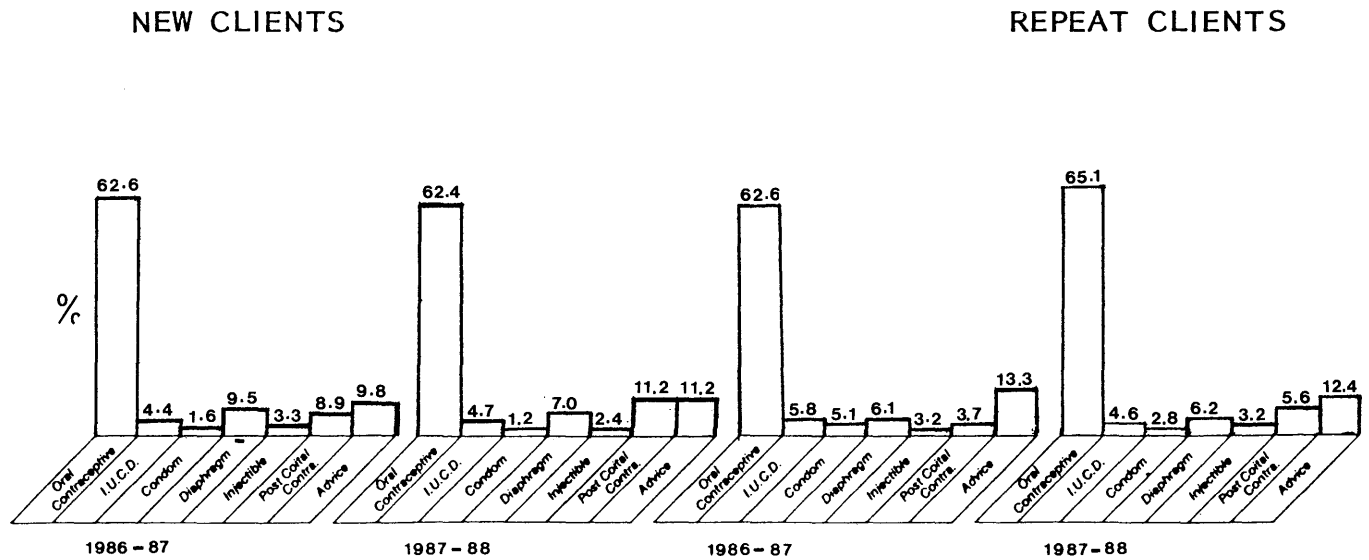
During the year approximately 51 300 clinic services were provided to clients, including 12 900 telephone calls received by the Sexual Health Hotline. This is a 13% increase over the total figures for the year 1986-87.

Figure 1: CLINICAL SERVICES



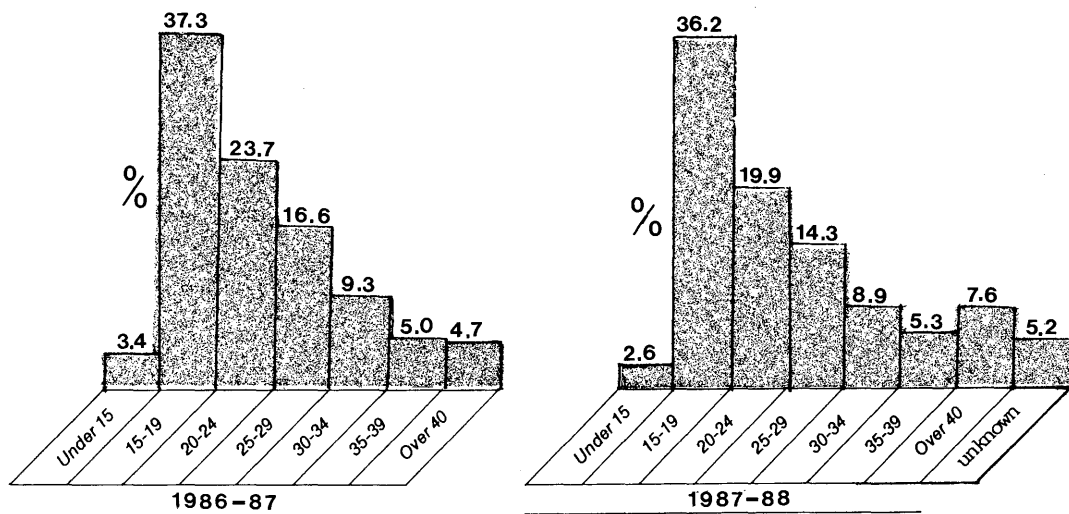
There has been no significant change in the pattern of contraceptive use by clients. The pill maintains its popularity while IUCD usage continues to decline. Fewer new clients have chosen barrier methods of contraception, and there has been an increase in the use of the post coital contraceptive.

Figure 2: CONTRACEPTIVE METHODS



A total of 4 930 new clients registered with FPA clinics this year, an increase of 20.6% over the figures for the year 1986-87. Clients were slightly older this year, with 62% being under the age of 24 years, compared to 64% for last year. This was mainly due to an increase in the number of women over the age of 40 years registering with FPA this year.

Figure 3: AGE PROFILE OF NEW CLIENTS



YOUTH CLINICS

Excellent support from the host agencies, Second Story, Salisbury Shopfront and Noarlunga Health Village, together with enthusiastic work by FPA regional staff has brought about a marked increase in the number of youth people being seen in these clinics. The benefits to the clients of having a number of support services in close proximity is considerable.

COUNTRY CLINICS

This year there has been an increased demand for FPA services from country areas in South Australia.

Services were provided for women in

- | | | |
|---------------|--------------|--------------|
| . Coober Pedy | . Coonalpyn | . Oodnadatta |
| . Tintinara | . Marla | . Kieth |
| . Mintabie | . Bordertown | . Andamooka |
| . Minlaton | | . Tarcoola |

Clinics were enthusiastically received and resulted in requests for future visits.

ETHNIC CLINICS

This year the Multicultural Services Coordinator organised clinics for the Kampuchean, Polish and Vietnamese communities in order to meet the perceived needs of migrants and refugees within these communities.

An interpreting service was provided for Polish clients attending FPA clinics, in addition to assistance and support to individuals from various cultural and language backgrounds.

REGIONAL CLINICS

FPA provides clinic services at various locations throughout Adelaide.

- . In May 1988 a new clinic was established in the inner southern region at Somerton Park in order to improve access for the local community.
- . In May 1988 a second clinic commenced in the western region at Port Adelaide in response to high demands on the existing clinic.

FPA CLINIC LOCATIONS

- . Annual Subscription \$5
- . Consultations are free
- . Contraceptives available for sale at all clinics

Enquiries (08) 31 5177 Country Callers (008) 188 171

KENSINGTON

17 Phillips Street
Kensington
31 5177

Monday to Friday - Day and Evening
Saturday Morning
Pregnancy Clinics - Tuesday Evening
Friday Morning

NORTHERN REGION

Elizabeth
Lyell McEwin Health Service
Community Health Services Building
Haydown Road
Elizabeth Vale
31 5177

Munno Para
Munno Para Community Health Service
Crittenden Road
Munno Para
254 1444

Youth Clinic
Salisbury Shopfront
Shop No 4
72 John Street
Salisbury
281 1775

EASTERN REGION

Modbury
Tea Tree Gully Community Health Centre
77 Smart Road
Modbury
31 5177

Youth Clinic
Second Story Youth
Second Floor
102 Rundle Mall
(Entrance off Charles St)
232 0233

WESTERN REGION

Port Adelaide
 Port Adelaide Community Health Service
 Cnr Dale & Church Street
 Port Adelaide
 240 9611

Torrens Road Clinic
 Hindmarsh Community Clinic
 163 Torrens Road
 Ridleyton
 31 5177

INNER SOUTHERN REGION

Somerton
 Brighton Glenelg Community Centre
 29 Tarlton Street
 Somerton Park
 31 5177

Flinders Medical Centre
 Consulting Clinic G
 Flinders Drive
 Bedford Park
 31 5177

SOUTHERN REGION

Noarlunga
 Noarlunga Health Village
 Alexander Kelly Drive
 Noarlunga
 384 9222

Youth Clinic
 Noarlunga Health Village
 Noarlunga
 384 9222

SPECIAL SERVICES

Drop in Pregnancy Testing Service
Kensington
17 Phillips Street
Kensington
31 5177

Monday to Friday 8.30am-5.00pm
Saturday 8.30am-11.30am
Pregnancy Test Costs \$6

ETHNIC CLINICS

No appointment is necessary

KAMPUCHEAN
Torrens Road Clinic
Hindmarsh Community Centre
163 Torrens Road
Ridleyton

Second Tuesday of each month 1.00-4.00pm

POLISH - VIETNAMESE

Now operating on an ad hoc basis on request by either ethnic community.

FAMILY PLANNING NURSE PRACTITIONERS

Nurse Practitioners have become an important part of clinic services and provide a valuable role in seeing well-women. By the end of 1988, almost all FPA Nurses will be qualified as Nurse Practitioners.

SOCIAL WORK SERVICES

During the year social workers were involved in a variety of sexual health care services and activities.

- . Counselling service to individuals and couples with
 - unplanned pregnancy
 - relationship problems
 - grief reaction to miscarriage, abortion or infertility
 - sexual difficulties
- . Introduction of the Drop in Pregnancy Testing Service at Kensington
- . Team development workshops for regional staff
- . Sessions on unplanned pregnancy and sexual difficulties in FPA courses for doctors and nurses
- . Supervision of a social work student on placement

COMMUNITY SERVICES

The Education Section has now become "Community Services" - a term which reflects the objectives of regionalization, and involves other activities undertaken by the team such as community nursing, networking and involvement in community health activities.

COMMUNITY EDUCATION

FPA community education services aim to increase knowledge, awareness and acceptance of issues in sexuality, in order to promote effective informed decision- making.

All programs focus on encouraging open discussion about attitudes and values in sexuality as a frame-work around which to build factual information. Programs usually consist of two or more sessions, and for groups such as parents, youth and the disabled, may extend to six or more sessions.

Educators have provided a range of programs to country areas also, including Andamooka, Coober Pedy, Leigh Creek, Whyalla, Tarcoola, Oodnadatta, Port Augusta, Port Pirie and surrounding towns, Mt Gambier, Keith, Bordertown, Coonalpyn, Meningie, Tintinara and Penola.

Figure 4: COMMUNITY EDUCATION PROGRAMS PROVIDED TO COMMUNITY GROUPS AND ORGANISATIONS DURING 1987-88

| PROGRAM | NUMBER | PARTICIPANTS |
|----------------------------------|--------|------------------------------|
| Adolescent Development | 527 | primary school students |
| Reproduction | 5,338 | high school students |
| Planned Parenthood | 574 | ethnic community groups |
| Relationships and Sexuality | 336 | country schools |
| Sexuality | 550 | community youth groups |
| Contraception | 675 | tertiary students |
| Sexual Responsibility | 224 | disabled groups & caregivers |
| Communicating with Your Child | 569 | parent groups |
| Communicating with Your Teenager | | |
| Sex Education and Young Children | | |
| Womens Health | 1,096 | community adult groups |
| Relationships and Sexuality | | |
| participating teachers | 191 | |

TOTAL: 10,060

REGIONAL TEAMS

FPA has established 5 regional teams located throughout the Adelaide metropolitan region. Each team provides clinic and community education services and a professional education consultancy to its local community. Regional teams consist of a community nurse, community educator, doctor, clinic nurse and receptionist. A further regional team located in Port Pirie provides community education and a professional education consultancy to northern country area of South Australia.

Regional teams are based at local community health centres so that community access to our services is increased, and the particular needs of the community can be met directly. Access to FPA services is also enhanced by liaison with other health agencies. Involvement by FPA staff in community committees and forums has increased during the year. The objectives of this activity is to promote family planning goals and services in relevant areas.

EASTERN TEAM
17 Phillips Street
Kensington
31 5177

INNER SOUTHERN TEAM
Brighton Glenelg Community Centre
20 Tarlton Street
Somerton Park
294 5885

NORTHERN TEAM
Lyell McEwin Health Service
Haydown Road
Elizabeth Vale
282 1206

SOUTHERN TEAM
Noarlunga Health Village
Alexander Kelly Drive
Noarlunga Centre
384 9222

WESTERN TEAM
Port Adelaide Community Health Service
Cnr Dale and Church Street
Port Adelaide
240 9611

PORT PIRIE TEAM
C/- Department for Community Welfare
75 Gertrude Street
Port Pirie
086 321711

PROFESSIONAL EDUCATION AND TRAINING

FPA professional education services provide health, welfare and education professionals with skills, knowledge & methodology relevant to sexual health care and sexuality education in order to increase community access to accurate information and decision-making skills.

The redirection of services from direct delivery to a focus on "trainer-training" has led to an increased emphasis on professional education and the establishment of the full-time position of Professional Education Co-ordinator.

The year also saw greater support and recognition of teacher participation in delivering sexuality education programs in South Australian schools. The Education Department provided teacher release time for more than 160 metropolitan and rural teachers to attend 'Teaching About Sexuality - Teacher Inservice Course'. This teacher training course has enabled teachers to provide students with appropriate decision-making strategies in the area of sexuality and relationships.

'Teaching About Sexuality - Teacher Inservice Course' was also presented to teachers in Andamooka, Coober Pedy, Clare, Leigh Creek, the Iron Triangle and the South East.

During the year there was an increase in the number of health, education and welfare workers who attended FPA professional education and training programs. Participants came from various community health services, hospitals, community agencies and government departments.

Figure 5: PROFESSIONAL EDUCATION AND TRAINING
PROGRAMS PROVIDED TO HEALTH, EDUCATION AND
WELFARE WORKERS DURING 1987-88

| Program | No. of participants |
|---|---------------------|
| Community Educator Course in Sexuality | 49 |
| Enrolled Nurse Course in Family Planning | 50 |
| Outreach Nursing | 110 |
| Nurse Practitioner Course in Sexual Health Care | 150 |
| Nurses Post-Registration Workshops | 400 |
| Post Graduate Medical Course in Family Planning | 29 |
| Aboriginal Health Workers | 20 |
| Teaching About Sexuality - Teacher Inservice Course | 203 |
| Teacher Workshops | 306 |
| Sexuality Education and Disability | 63 |
| Other Health Professionals | 401 |
| TOTAL: | 1,731 |

STAFF DEVELOPMENT

The process of regionalisation has necessitated a change in the professional roles for community educators, community nurses and clinic staff in regional teams. Consequently this year the aim of many training sessions for staff has been to provide the skills and knowledge to facilitate this change and to establish new and effective structures which supported staff in service delivery.

The following staff development and inservice programs were provided.

- . Team Development program - Western Team
- . 2 days Community Educators Course - Nurses
- . Team Development program - Northern Team
- . National Education Off. Workshop - Sue Foster
- . AIDS Counselling, STD Service - Wendy Willow
- . 3 days inservice establishing priorities and directions for 1988 - Community Educators and Community Nurses
- . Drop-in Pregnancy Testing Training - Receptionists and Nurses
- . Team Development program - Inner Southern Team
- . 2 days training for Teacher Inservice - Community Educators
- . Telephone Counselling Course - Nurses
- . Pregnancy Counselling Course - Nurses and Doctors
- . Instructing Doctors & Nurses Workshop - Sue Foster
- . Quality Assurance in Social Work - Wendy Willow
- . Breast Lumps Seminar - Doctors and Nurses
- . Contraceptive Update - Receptionists
- . Menopause Seminar - Doctors

During the year staff attended the following conferences, seminars and courses

- | | |
|---|---|
| . Public Health Association Conference Sydney | Judith Dwyer |
| . CCEHA Seminar "Performance Appraisal" | Judith Dwyer Sue Foster Bronwen Weller Ian Downer |
| . Australian Community Health Association National Conference, Melbourne | Judith Dwyer (Keynote speaker) Sue Foster (Workshop Facilitator) |
| . National Ethnic Health Conference | Lili Wiedenmann |
| . National Family Planning Forum Melbourne | Heather Macdonald Judith Dwyer Sue Foster Bronwen Weller Jan Dolman |

MULTICULTURAL HEALTH

In July 1987 FPA was successful in a submission to the Community Employment Program, Federal Department of Employment and Industrial Relations and the South Australian Department of Labour, for funding of \$47,098 to assess the health needs of Polish and Vietnamese women in the Adelaide metropolitan region. Over the 10 months of the project, one Polish and two Vietnamese workers interviewed approximately 100 women about their health needs. Information about the demographic and mobility trends of both communities was also compiled.

During the year, the Multicultural Services Coordinator developed and provided

- . sexual health care services and education programs for newly arrived migrants and refugees
- . professional education and training seminars on multiculturalism and sexuality issues for other health, education and welfare workers servicing ethnic community agencies.

LIBRARY RESOURCE CENTRE

The Library Resource Centre was temporarily closed this year during the redevelopment of FPA headquarters in Kensington. This provided the opportunity for updating and improving existing resources. A Library Committee was formed in February 1988 to provide advice and support to the Library Resource Centre Coordinator on future directions and developments.

FAMILY PLANNING FEDERATION OF AUSTRALIA INC. REPORT

Highlights 1987-88

- . In October 1987 FPFA Council made the decision to relocate the Secretariat to Canberra, ACT.
- . In December 1988 FPFA Council approved the appointment of a National Coordinator of Education. Ms Rosemary Coates will take the position in late 1988.
- . In June 1988 the annual meeting of the East and South East Asia and Oceania Region (ESEAOR) and the Australian Family Planning Forum were held in Melbourne.
- . In June 1988 FPFA announced the success of the submission to the Australian International Development Assistance Bureau for funding for the production of reproductive health videos for people in the South Pacific. Production has been completed and four videos are available for distribution.
- . HIV/AIDS
- . STDs, Condom Use and Male Responsibility
- . Attitudes to Pregnancy, Contraception, and Family Planning Philosophy
- . An Overview of contraceptive Methods available in the South Pacific
- . In August 1987 FPFA was host to a delegation from the Family Planning Association of China who were visiting Australia to observe the management and organisation structures, and service delivery of FPAs.
- . In December 1987 Ms Pam Simons, the Executive Officer of FPFA, visited China to participate in a family planning and primary health care project.
- . FPFA also welcomed two representatives from the International Planned Parenthood Federation (IPPF) in Australia en route to Papua New Guinea to assess the need for family planning programs in the South Pacific. They were presented with copies of the study of reproductive health needs in the South Pacific carried out by FPFA consultants in 1985-86.
- . In November 1987 FPFA produced the booklet 'Family Planning Fact Kit for Well Informed Parliamentarians' which was distributed to all FPAs and State members of parliament on National Family Planning Day held on Tuesday 17 November. The booklet provides an overview of current FPA services and activities in Australia.

- . In 1986-87 FPFA was successful in the submission to the Australian Bicentennial Authority Women's Program for \$30 000 funding to produce a book on the history of family planning in Australia. Authors John Porter, Stefania Siedlecky and Diana Wyndham are currently working on the manuscript for publication.
- . FPFA 1986-87 Medical Task Force Guidelines on Contraception and Diabetes Mellitus, the Premenstrual Syndrome and Contraception and the Skin were accepted for publication in Australian Family Physician in late 1988.
- . In February 1987 FPFA was successful in a submission to the Commonwealth Department for Health for \$40 000 funding to assess family planning needs in outback and isolated areas of Australia. Over the 16 months of the project, a nurse educator was placed at Mount Isa in Queensland. A further two nurse educators were placed at Broken Hill in New South Wales. The project was well received and it is hoped that it has provided the basis for on-going cooperation.

FINANCIAL REPORT

The financial statements for the year show a slight increase in the overall operating costs and significant expenditure of capital funds on the new building project.

OPERATING ACCOUNT

Financial management during the year was aimed towards the retention of a significant proportion of trading income for use in the building project. This was achieved - a total amount of \$104347 was transferred from the Operating account to the Savings account.

The operating expenditure increased by 14% over last year, due to an increase in activity levels and special costs such as the occurrence of a 27th pay and the purchase of a new autoclave. Federal funding increased to \$1090405 or by 27% and State Government funding increased to \$457000 or by 21%.

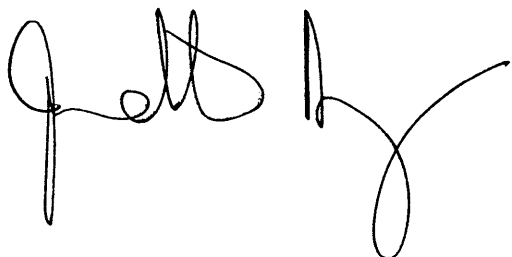
CAPITAL ACCOUNT

During the year a total of \$465208 was expended on the building project which commenced in February 1988. This represents just over half of the total cost of the project and has virtually exhausted the Association's accumulated earnings. A capital grant of \$100000 was generously provided by the South Australian Health Commission towards the building costs. This amount, together with receipts from the sale of 21 and 23-25 High Street properties, will meet the bulk of the remaining costs. Settlement for both premises will occur in the 1988-89 financial year.

FINANCIAL DECLARATION

We, Judith Dwyer, Chief Executive Officer and Richard Hicks, President of the Family Planning Association of SA Inc state that, in our opinion the attached Statement of Capital Receipts and Payments and Statement of Operating Receipts and Payments are properly drawn up as to give a true and fair view of the state of affairs of the Association at the year ended 30 June 1988.

On behalf of the Council

A handwritten signature in black ink, appearing to read 'Judith Dwyer', with a stylized, flowing script.

Judith Dwyer
Chief Executive Officer

A handwritten signature in black ink, appearing to read 'Richard Hicks', with a stylized, flowing script.

Richard Hicks
President

Adelaide
15 September 1988

AUDITOR'S REPORT

We have audited the accompanying accounts of the Family Planning Association of SA Inc comprising the Statement of Operating Receipts and Payments and the Statement of Capital Receipts and Payments as at 30 June 1988 and have received all the information and explanations we required for the purpose of our audit. Our audit was conducted in accordance with the Australian Auditing Standards and accordingly included such tests of the accounting records and such other auditing procedures as we considered necessary in the circumstances, except for the following scope limitation.

It was not practical for the Association to establish control over receipts prior to their entry into the accounting records. Accordingly, our audit of receipts was limited to the amounts recorded in the initial books of entry.

In our opinion, subject to any adjustment which may have resulted had we been able to effectively audit all receipts as mentioned above

- (i) there were kept by the organisation in respect of the year satisfactory accounting records detailing the sources and nature of the income of the Association and the nature and purpose of expenditure; and
- (ii) the attached accounts, prepared under the historical cost convention, and in accordance with the provisions of the Associations Incorporation Act, 1985, as amended, are properly drawn up so as to give a true and fair view of
 - (a) the financial affairs of the Association as at 30 June 1988 and
 - (b) the receipts and payments, and surplus of the Association for the year ended on that date.

Mann Judd

MANN JUDD
CHARTERED ACCOUNTANTS

B.R. Davies

B.R. DAVIES
Partner

Dated this 22nd day of September, 1988

STATEMENT OF OPERATING RECEIPTS AND PAYMENTS
FOR THE YEAR ENDED 30 JUNE 1988

| 1986 - 87 | Payments | Clinical | Non Clinical | Total |
|-------------------------|--|-----------|--------------|-----------|
| OPERATING EXPENSES | | | | |
| 1 075 860 | Salaries & wages | 707 187 | 420 754 | 1127 941 |
| 17 651 | Superannuation | 26 307 | 13 834 | 40 141 |
| 25 680 | Workers Compensation Prem | 41 215 | 17 006 | 58 221 |
| 750 | Rent - Regional accom | 6 180 | 2 288 | 8 468 |
| 22 433 | Medical supplies | 22 794 | | 22 794 |
| | Long Service Leave accrual | 12 000 | 5 000 | 17 000 |
| EQUIPMENT & INFORMATION | | | | |
| 23 195 | Instruments & appliances | 29 253 | | 29 253 |
| 12 549 | Library, films & video | | 13 649 | 13 649 |
| 10 438 | Equipment | 13 978 | 11 436 | 25 414 |
| 3 347 | Leaflets & posters | 5 795 | 2 562 | 8 357 |
| 16 036 | Motor vehicles | | 22 892 | 22 892 |
| ADMINISTRATION | | | | |
| | Publicity & information | 2 271 | 8 014 | 10 285 |
| 1 823 | Bank charges | 1 687 | 854 | 2 541 |
| 2 458 | Accounting & auditing | 1 955 | 978 | 2 933 |
| 19 442 | Cleaning & laundry | 11 250 | 4 730 | 15 980 |
| 9 919 | Fuel, light & power | 8 333 | 4 293 | 12 626 |
| 6 666 | Insurance premiums | 6 312 | 3 158 | 9 470 |
| 13 472 | Postage, freight & phone | 11 993 | 5 479 | 17 472 |
| 31 896 | Printing & stationery | 21 718 | 7 935 | 29 653 |
| | Repairs & maintenance | 7 922 | 3 801 | 11 723 |
| 6 409 | . Premises | 4 077 | 2 045 | 6 122 |
| 7 485 | . Equipment | 3 385 | 1 695 | 5 080 |
| 21 060 | Transport | 11 536 | 5 803 | 17 339 |
| 4 457 | Rates & taxes | 3 250 | 1 882 | 5 132 |
| 7 764 | Conferences & Seminars | 9 802 | 1 965 | 11 767 |
| 1 422 | Advertising for staff | 2 404 | 894 | 3 298 |
| 2 169 | Sundries | 600 | 2 547 | 3 147 |
| 6 359 | Courier service | 9 902 | | 9 902 |
| | Aboriginal pamphlets | | 4 000 | 4 000 |
| | FPA-SA/RFDS grant | | 6 853 | 6 853 |
| 64 437 | HPG Development Outreach | 61 081 | | 61 081 |
| 6 200 | NACAIDS | | | |
| 1 421 377 | | 1 044 187 | 576 347 | 1 620 534 |
| RECEIPTS | | | | |
| 799 000 | Health Program Grant | 1 031 705 | | 1 031 705 |
| 56 250 | Family Planning Grant | | 58 700 | 58 700 |
| 376 100 | South Australian Health Commission Grant | | 457 000 | 457 000 |
| 94 690 | Special Grants | | | |
| 29 686 | Surplus from contraceptive sales | 106 054 | | 106 054 |
| 6 266 | Surplus from book/video sale/hire | | 5 029 | 5 029 |
| 16 640 | Training unit income | 3 605 | 16 796 | 20 401 |
| 25 716 | Annual subscriptions | | 33 705 | 33 705 |
| 303 | Sundries | | 914 | 914 |
| | FPA-SA/RFDS Grant | | 11 000 | 11 000 |
| | Staff fund | | 373 | 373 |
| | Surplus from operations | (97 177) | (7 170) | (104 347) |
| 1 404 651 | | 1 044 187 | 576 347 | 1 620 534 |

STATEMENT OF CAPITAL RECEIPTS AND PAYMENTS
FOR THE YEAR ENDED 30 JUNE 1988

1986-87

| | | | | | |
|-----|-----|--|--------|---------|---------|
| 212 | 293 | Opening Account Balance as at 1 July 1987 | 38 233 | 260 836 | 299 069 |
|-----|-----|--|--------|---------|---------|

PAYMENTS

| | | | | | |
|----------|-------------------------------|---------|----|---------|---------|
| (414) | Seminar Costs | | | | |
| (67) | FID Tax | | 16 | | 16 |
| (50) | Imprest funds | | | | |
| (1 244) | Chief Executive Officers fund | 601 | | | 601 |
| (600) | Nurse Practitioner course | | | | |
| (3 444) | Building costs | 464 591 | | | 464 591 |
| | Transfer to Savings A/c | | | 180 107 | 180 107 |
| | Transfer to Operating A/c | | | 200 000 | 200 000 |

| | | | | |
|----------|--|---------|---------|---------|
| (5 819) | | 465 208 | 380 107 | 845 315 |
|----------|--|---------|---------|---------|

RECEIPTS

| | | | | |
|--------|-----------------------------|---------|---------|---------|
| 40 395 | Interest received | 3 775 | | 3 775 |
| 52 200 | Transfer from Investments | 203 072 | | 203 072 |
| | Transfer from Operating A/C | 121 000 | | 121 000 |
| | Donations received | 827 | | 827 |
| | Interest re-invested | | 19 271 | 19 271 |
| | Transfer from Operating A/C | | | |
| | New funds | | 100 000 | 100 000 |
| | SAHC grant | | 100 000 | 100 000 |
| | Surplus from operations | 104 347 | | 104 347 |

| | | | | |
|--------|--|---------|---------|---------|
| 92 595 | | 433 021 | 219 271 | 652 292 |
|--------|--|---------|---------|---------|

| | | | | |
|--|---|----------|--|----------|
| | Deficit carried forward from prior years | (7 679) | | (7 679) |
|--|---|----------|--|----------|

| | | | | |
|---------|--|----------|---------|--------|
| 299 069 | | (1 633) | 100 000 | 98 367 |
|---------|--|----------|---------|--------|

Represented by

| | |
|---------------|----------|
| Operating A/C | (43 332) |
| Savings A/C | 41 699 |
| Investments | 100 000 |

\$ 98 367

17 Phillips Street Kensington
South Australia 5068
Phone (08) 31 5177 (008) 188 171

